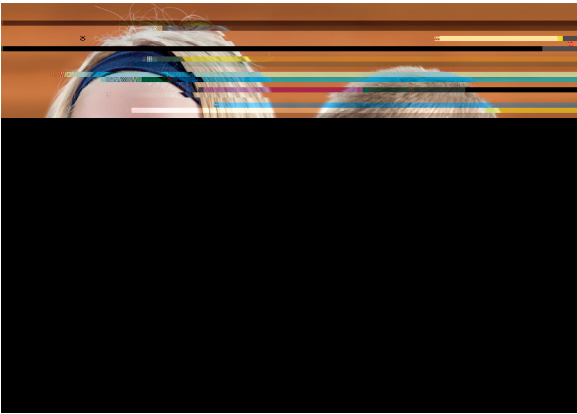


## Building for a future generation



You can make a world of difference by donating to the College's Voluntary Building Fund (VBF). These funds support key areas of our capital works program that are not covered by the School's operating budget.

In the past, the College has received financial support through philanthropic donations from families and staff who came with us on the journey and saw a vision



for this College. Your students today are enjoying the benefits of the generosity of others gone before.

The suggested family contribution is \$200 per year. Your commitment and participation in this way is fundamental to the present and future developments at Citipointe Christian College.